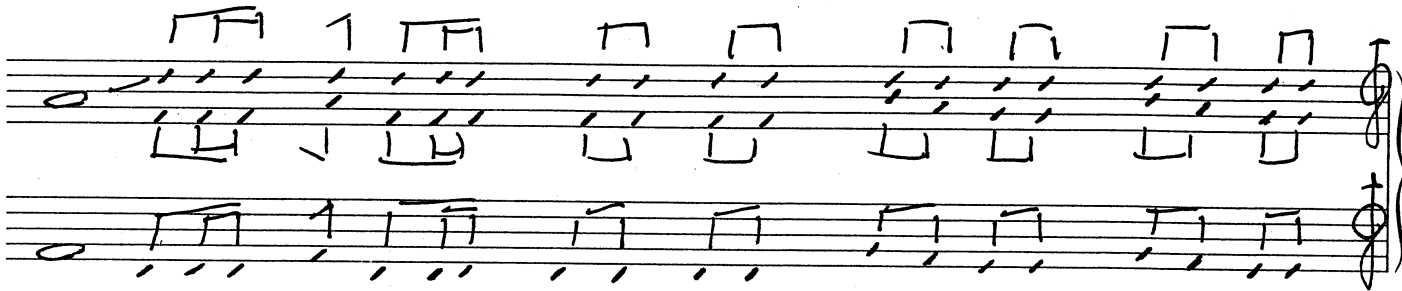
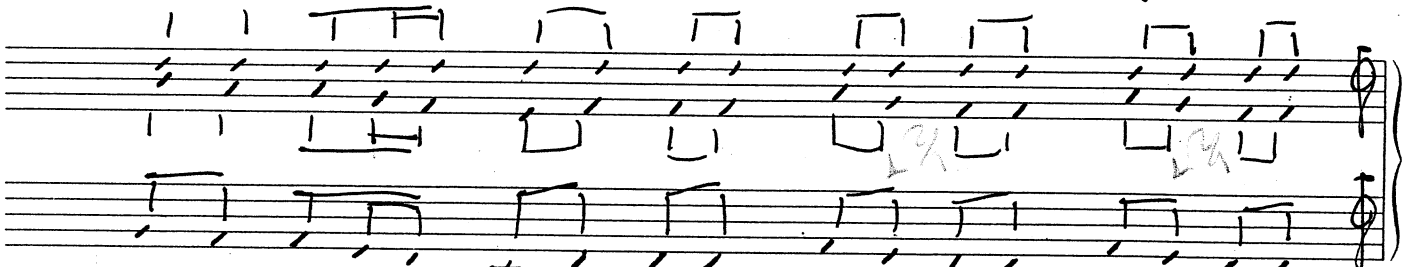


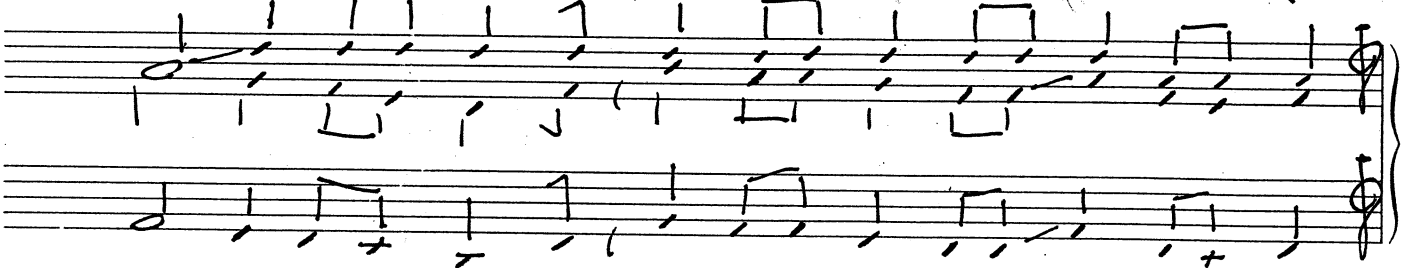
LARICERA



ESTRILVA RICCIO LINA E CANTANDO ARI LIA LE RA



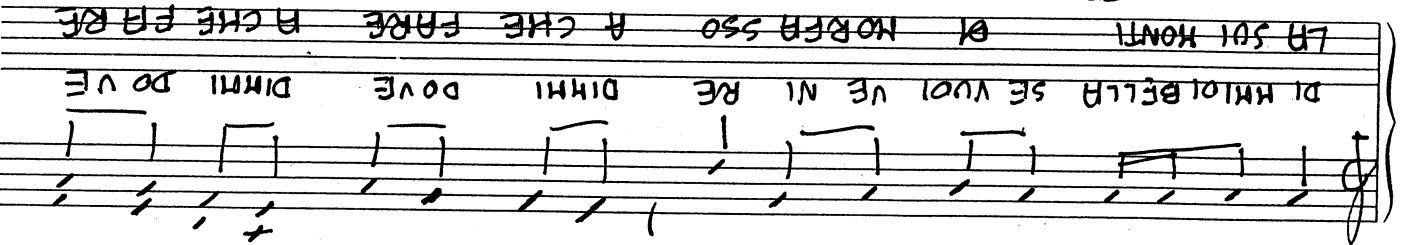
LA CI DA REN LA HA NO LA HA NO LA HA NO IL BACIO IL BACIO IL BACIO - - -



2-

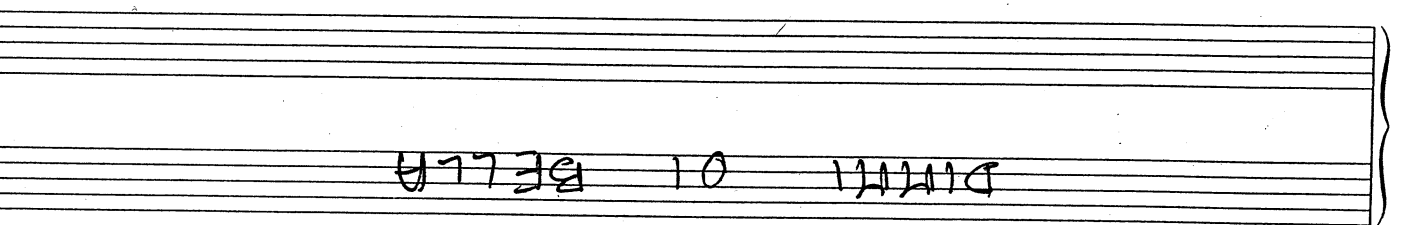
SOL PONTE

2-

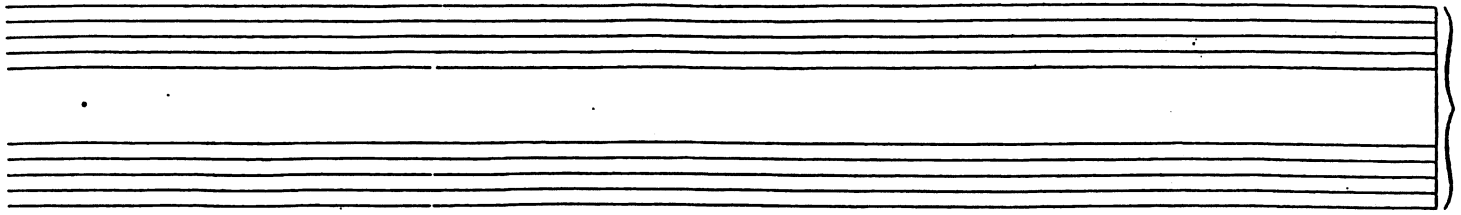


LA SOI MONTI DI NORB SSO A CHE FARE A CHE FARE

DI KHIOL BELLA SE VOI VE NI RE DIMMI DOVE DIMMI DOVE



DIMMI OI BELLA



Handwritten musical notation on two staves, featuring rhythmic patterns of vertical lines and horizontal strokes.

METALVIN RICCIO LINA E CANTANDO CARILINA TE RA

Handwritten musical notation on two staves, continuing the rhythmic patterns from the previous section.

LA CI DA REH LA HA NO LA HA NO LA HA NO DE LA - TOR
 IL BRACIO IL BRACIO IL BRACIO

Handwritten musical notation on two staves, continuing the rhythmic patterns.

2- SUL PONTE

Handwritten musical notation on two staves, continuing the rhythmic patterns.

Handwritten musical notation on two staves, continuing the rhythmic patterns.

DIMI OI BELLA