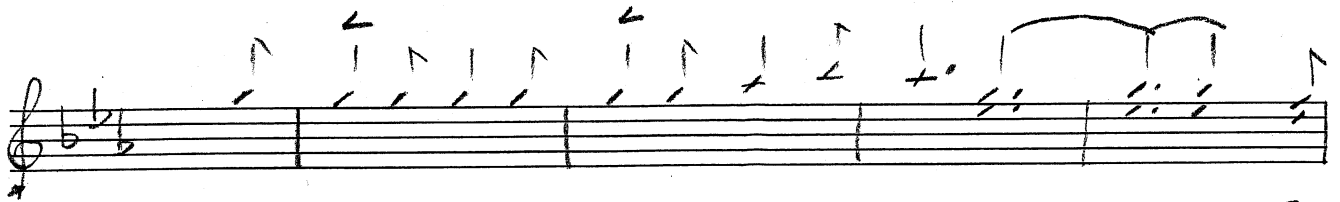
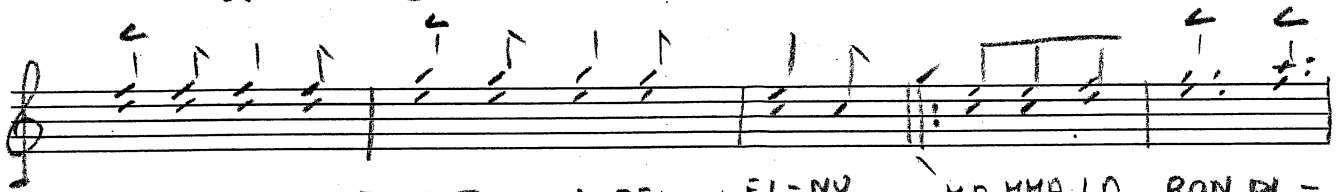


LA RONDINELLA



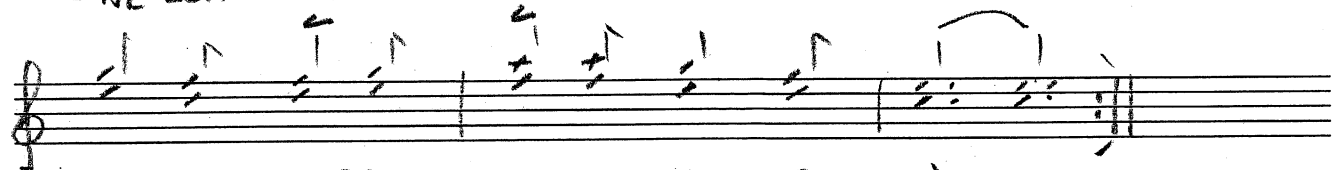
SU T'ACQUA ESUTTU TENTU NA-VI-GA-MU ————— E



SUTTA FUNDU È NATU LU DEL-FI-NU MAMMA LA ROND-



-NE LLA MAMMA LA ROND-NA MAMMA LA RON-DI-



-NE LLA GI RA VOLAE SE NE VA' —

